

WE-FOR-SHE BUTTONS

SYNOPSIS

To celebrate Women's Week and support the "We for She" initiative we are going to make buttons that represent notable women in history. Women who have accomplished great things or inspired others to think differently.

Choose a woman that you want to feature in your work.
Check your choice with Mr. Long to make sure it's appropriate and that the subject hasn't been chosen by another.

Write a brief paragraph explaining the contributions or accomplishments of this woman. Title it with her name.

PROCESS

STEP 1

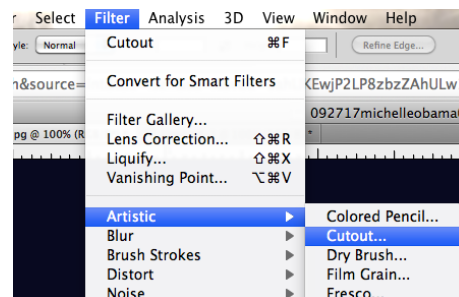
Find a large image of your subjects face in google Image search. Try to find one with a very simple or plain background. You also want one that contains the entire head and, trust me, it'll be easier to isolate the face/head if the hair is tide back or otherwise tidy.

Download it and open it in photoshop.



STEP 2

In your men bar select
Filter>Artistic>Cutout

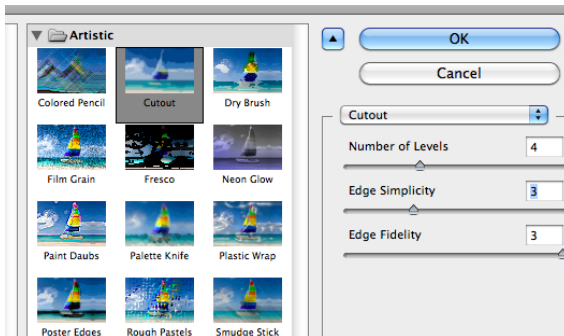


STEP 3

In the window that appears adjust the settings according to the setting in the diagram below.

(you can definitely play with this if you like but these are good starting points.)


press ok



STEP 4

Isolate the face

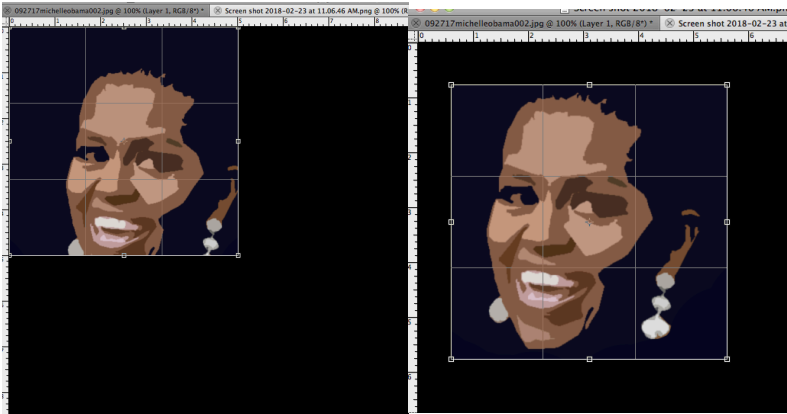
Use the eye dropper tool  to select the primary background colour

Then use the paintbrush tool  to paint over everything except the face.



STEP 5

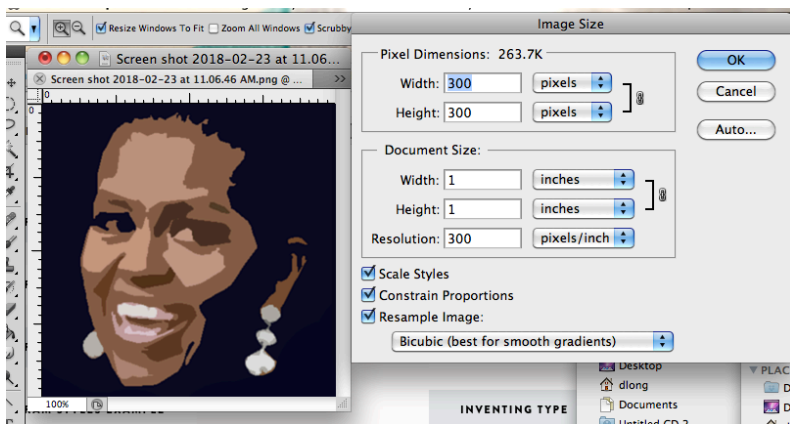
Use the crop tool  to create a square selection just large enough to include the entire head.



Press return

STEP 6

Resize square to 1" x 1" at 300 dpi



STEP 7

Change the canvas size to 1.75" x 1.75".

Select your brush tool and colour in the extra space



STEP 8

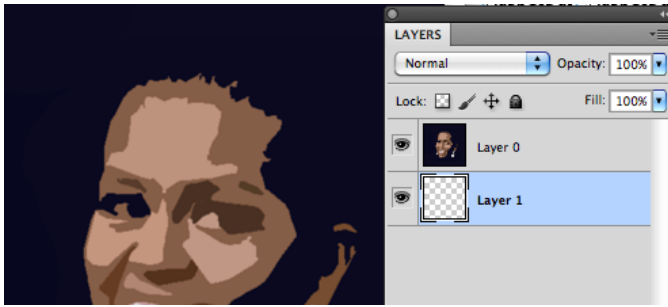
If you have a black and white image you may want to use your levels and colour balance functions (In Image>adjustments) to increase contrast and visual interest.



STEP 9

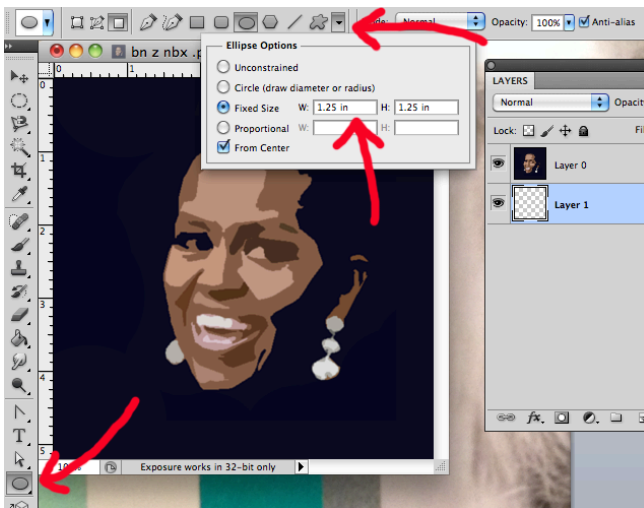
Unlock your background layer by double clicking on it and pressing return (this will rename it layer 0)

Create a new layer and drag it beneath layer 0 on your layers palette



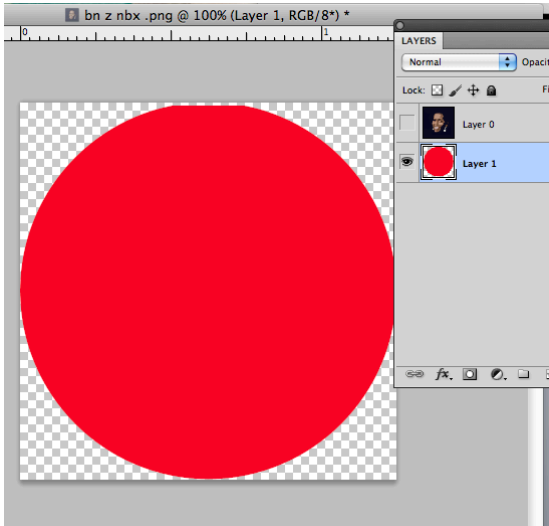
STEP 10

Select the ellipse tool and, in the drop down in your menu, enter 1.75 in in both the height and the width under "fixed size".



STEP 11

Selecting the bottom layer (layer 1) click in the middle to create a circle exactly 1.75" x 1.75" you can hide the top layer if you like.



STEP 12

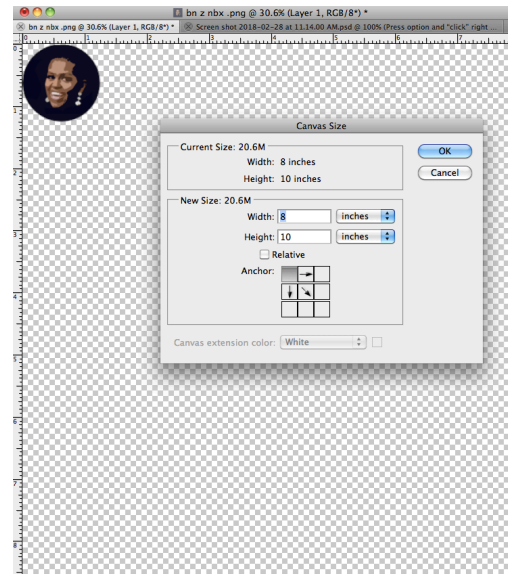
Create a layer mask by pressing the option key and dragging your cursor to the layers palette and click BETWEEN layers (you should see your cursor change shape to a double circle).

Flatten image



STEP 13

Increase the canvas size to 8" x 10" making sure the background is white or clear (not black) and anchoring your image to the top left.



STEP 14

Copy and paste image so that you have multiple copies of the image. Make sure you stick to a rough grid pattern to make cutting and trimming easier.

Hint: Once you have created one row, flatten the image, select the entire row and copy and paste that row multiple times down the length of the sheet.

You should have about 20 images per sheet.

