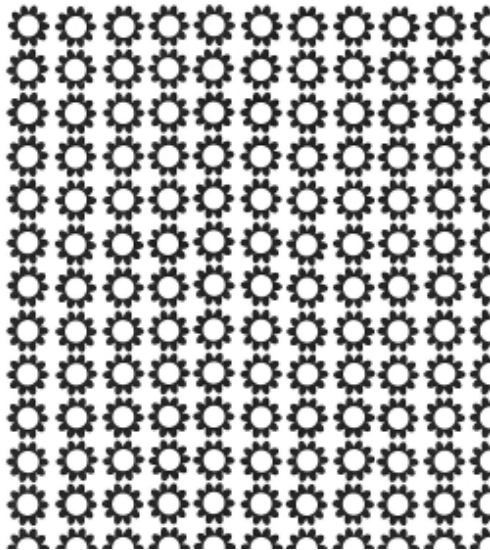


GRAPHIC DESIGN 10



REPETITION AND PATTERN IN DESIGN PART 2 (Introducing Colour)

ESTABLISHING A BASE IMAGE

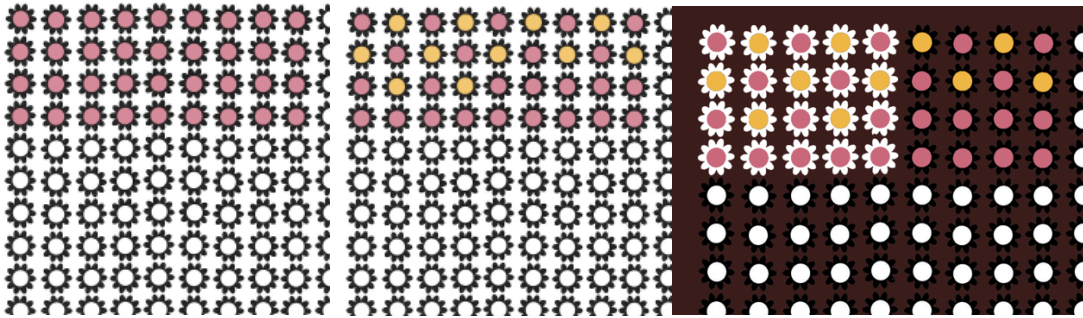
- Browse in the folder in our shared drive called Japanese Optical Art.
- Choose a design that appeals to you. The design should represent a reasonably complex pattern and be made up of isolatable shapes. (this means if you hit them with flood-fill it won't colour the whole design)
- Download it and open in Photoshop.
- Clean the file using appropriate methods such as Levels, Clone stamp tool, paintbrush etc etc. At this point in the year you should be able to do this without instruction.
- Depending on your chosen image you may now decide to create a slightly more complex repeat.
- Resize your image to 9" x 12" 300 dpi.



EMPLOYING COLOUR AS A COMPOSITIONAL DEVICE

- Use colour to create an additional pattern imposed on the existent shape based pattern.
- Use the colour schemes discovered in your Colour Palette assignment to inform your work here.
- Open your colour palette assignments in Photoshop. You only have to open one at time of course as you will only be using one of your developed colour palette at a time. You should now have your pattern file and your colour palette assignment open in Photoshop and be able to toggle between the two of them.
- Use your eyedropper tool  and select a colour to start with from your palette.
- Now toggle over to your pattern file and begin filling in areas of colour with the paint bucket tool. 
- You are trying to establish a pattern. You may wish to start out by simply filling in all like-shapes with the same colour, filling the background in with a different colour and going from there.
- You may also wish to establish a pattern right away. If you assign your colours a number and there are four colours you wish to employ then you may think about your patterns in terms of numbers. For example" 1234, 1234, 1234 OR 11233, 11233, 11233 etc.
- You can colour in the back ground if you wish. The background should contrast with your foreground pattern colours.
- You may use black or white alongside your colour palette but not both.
- You must use at least 4 colours in each palette but the amount of each you use is totally up to you.
- Create three different designs/documents with three different colour schemes. Make sure that each represents a successful employment of colour in the

creation of a pattern within your design. Make sure that all components of your pattern are recognizable and distinct.



You get the picture... but make it cooler.

Hand in three JPG documents that represent your three explorations.

To be continued...