

FONTSTRUCT FONT DESIGN PART 2

Now that you have the basics of Font design down lets start developing a font.

In the introductory assignment you created a letterform “A” in triangular, rectangular and curved forms.

Now we are going to try creating an A B and C, choosing **1** of the following as *your guide* (of course you can try more than one if you like):

1. You can use any of the letterforms you developed using your letterform development exercises. Parts 1 and 2 available [here](#) and [here](#). Of course you can also access the blank letterform development exercises on our [Graphics 11 webpage](#) or you can just use the work for this that you did in your sketchbook.



2. Try creating letterforms in the style of Neon lighting with a **stroke** around them. A stroke, for those who don't know or forgot, is simply an outline around any form – including letterforms. You can outline the letterforms or simply create the letterforms out of lines – know what I mean?



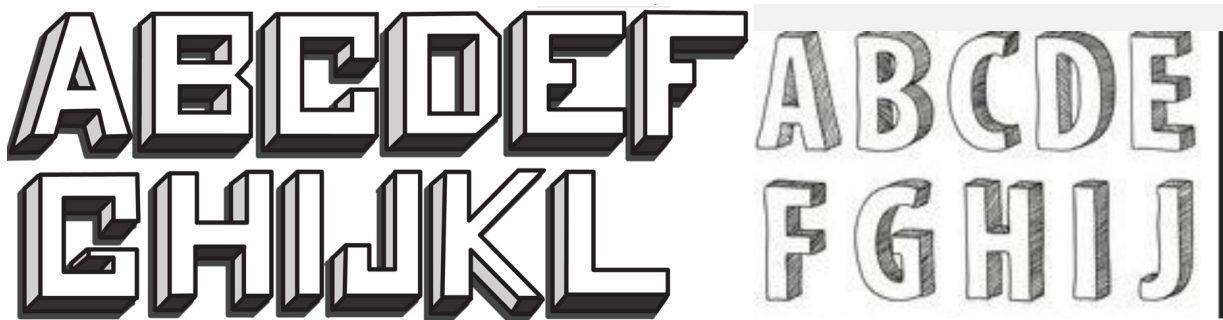
3. Try some Gothic lettering. Start with Calligraphic style lettering (you don't need a calligraphy pen – just draw it out). Then add some swashes and connecting lines.



4. You could create some geometric lettering – perhaps in the Bauhaus style? This uses simplification of letterforms into geometric shapes.



5. Or 3-D lettering? That would be cool.



PROCESS:

- Once you have chosen a strategy from the above list start doing some rough drafts with pencil on paper. Just to get the idea of how you will construct the letterforms in Fontstruct. Make sure you do roughs of all three letters (A,B and C).
- No matter what strategy you decide you can choose to shape your letter based on any of the shapes from the intro exercise.
- In FONTSTRUCT, develop each letterform in the appropriate A, B and C slots.

SUBMISSION:

- Take a picture of your rough/process pencil work
- Take a screen shot of the ABC that you have constructed in FONTSTRUCT.
- Create a pretty Photoshop document with both images in it.
- Save it as a 300 dpi jpg.
- Submit it according to teacher instructions.